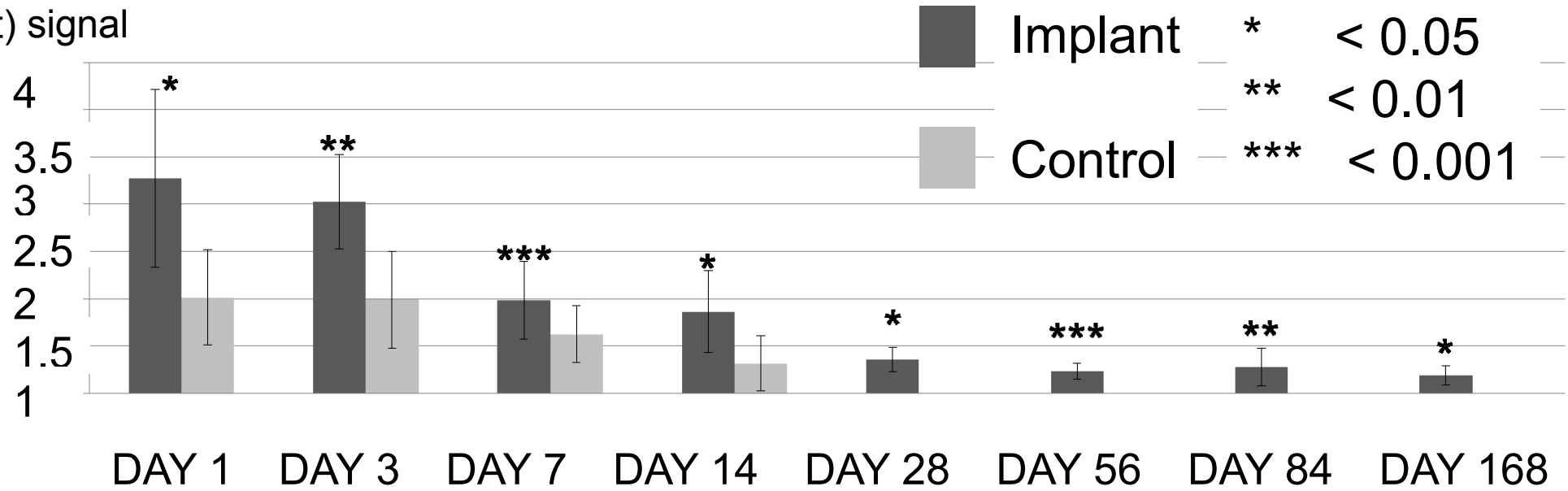
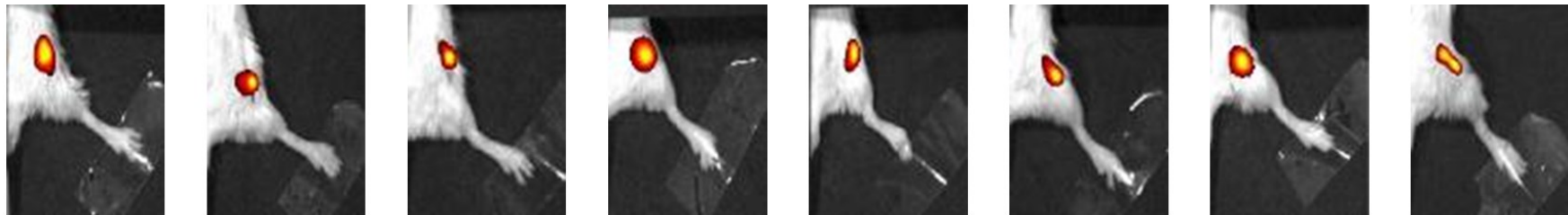


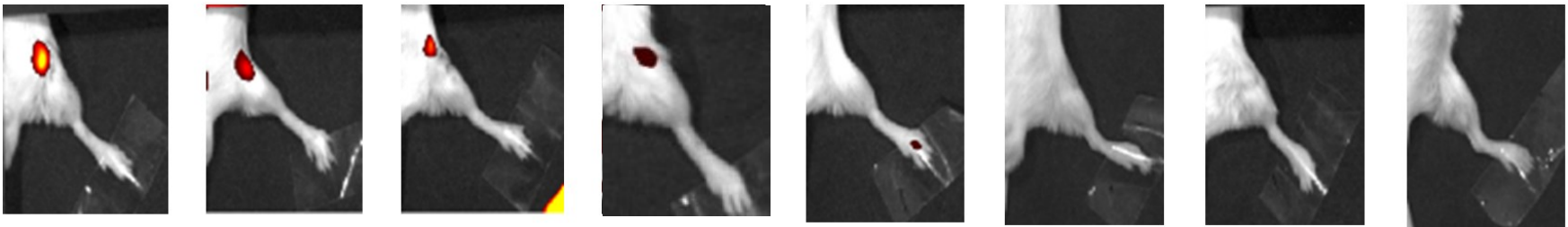
Infected foot (left)  
signal / Normal  
leg (right) signal

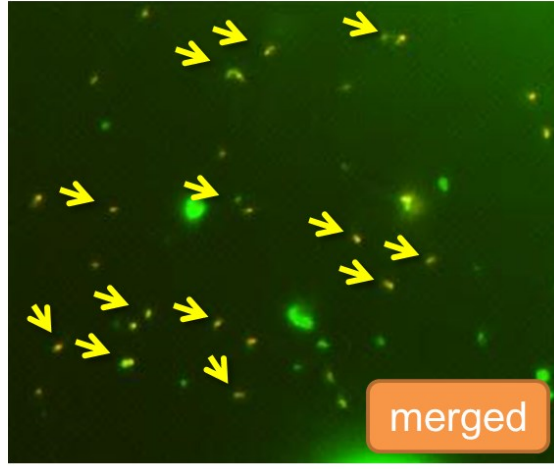
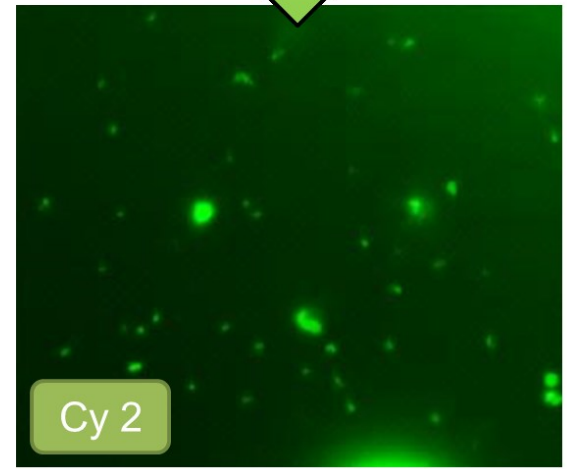
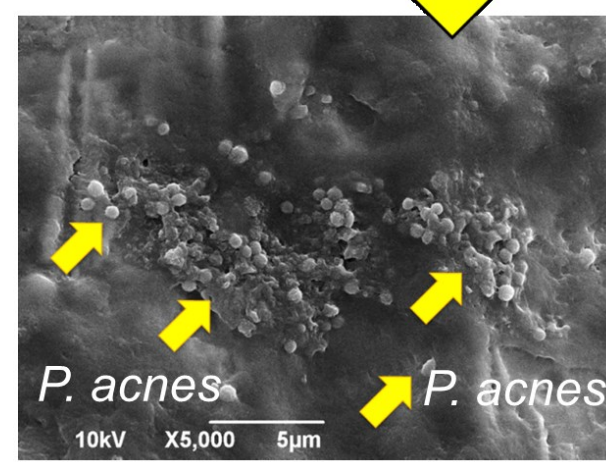
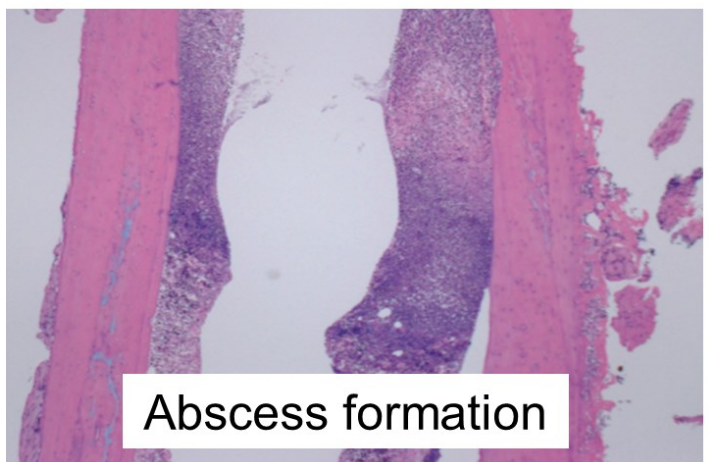
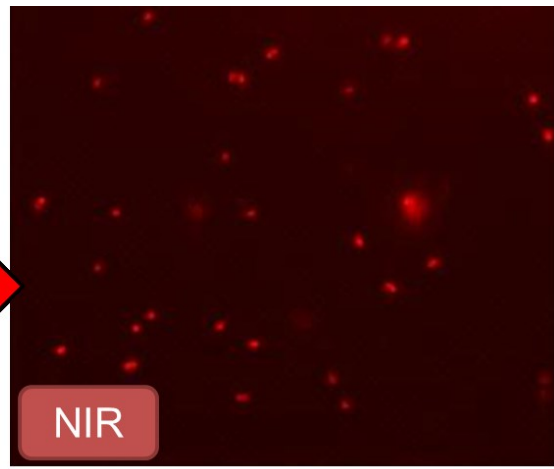
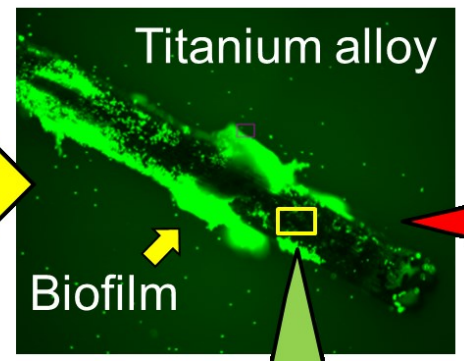
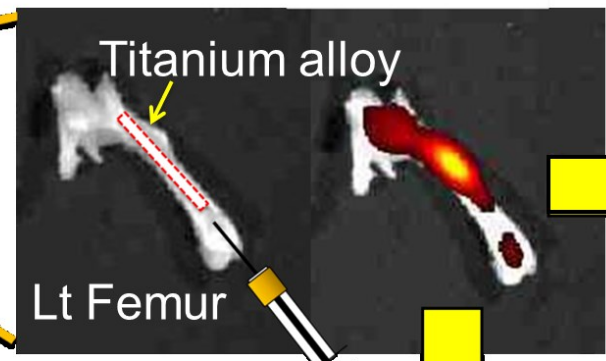
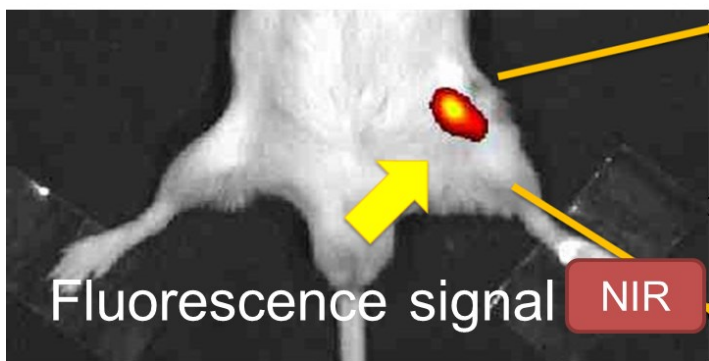


Implant  
group



Control  
group

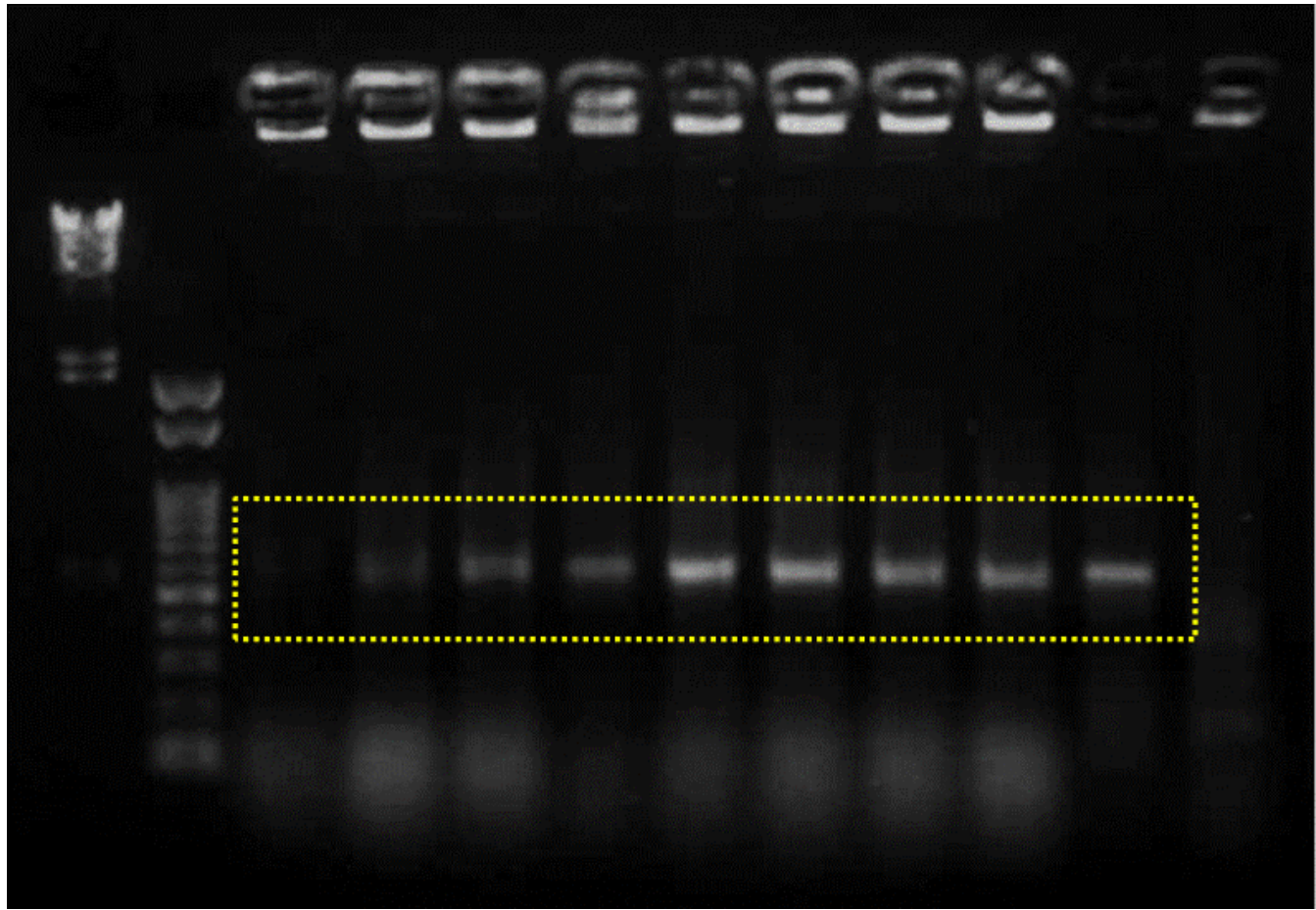




Microscope

Electronic microscope

Fluorescent microscope



Colony 1  
Colony 2  
Colony 3  
Colony 4  
Colony 5  
Colony 6  
Colony 7  
Colony 8  
P.acnes  
Positive control  
Negative control  
MSSA